

# allé

## THE COURTYARD COLLECTION

Receptacles & Planters



# COURTYARD COLLECTION

Allé Designs was created with the concept of offering simple, beautiful, and functional ancillary products that are used and enjoyed every day.

Our full range of products for commercial spaces have one commonality—

*a lasting aesthetic  
that transcends  
short-lived trends.*

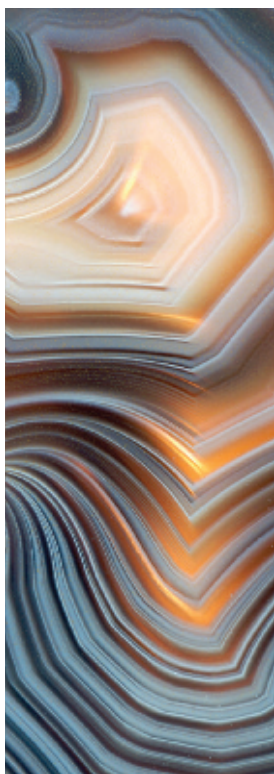
Allé Designs latest receptacle and planter  
COURTYARD COLLECTION enhances  
the beauty of any indoor or exterior space.

By pairing coordinated planters, this  
collection offers a subtle choice for  
managing waste and recyclables.

CCR– Custom Composit Resin...

- Dent Proof
- Leak Proof
- Non-Corrosive
- Over 60 Standard Finishes

All products in the COURTYARD COLLECTION  
are MADE IN THE USA and are available on  
GSA Contract.



# SOLA SERIES

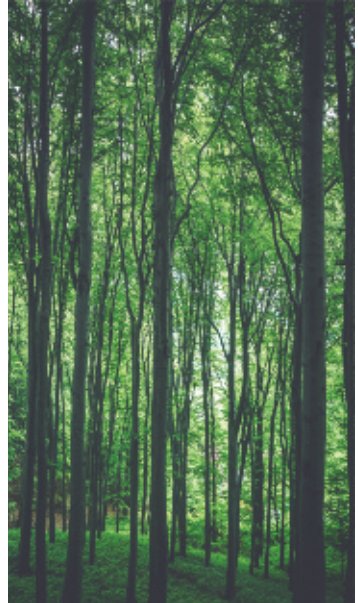




The Sola Series is designed with a tapered profile that speaks of sophistication. Add a pair to each side of a door for a statement-making entryway.

Or, position several around a collaboration space, lobby or lounge area to instantly add a stylish element.

Pairing Sola planters with coordinating waste receptacles offers a subtle choice for disposal.



# YUMA SERIES



The Yuma Series features a stunning and lightweight, tapered cube planter and receptacle.

Paired, alone or congregated this collection is offered in many sizes and finishes to fit any modern office space.





# CIRCA SERIES



Allé CIRCA SERIES is perfect for areas in need of individual or group placement of waste and recycle singles. These recycling singles are available in an

array of nature inspired colors to blend in seamlessly into the modern workspace.

Available with a selection of 4 standard tops for easy sorting.





# CUBIX SERIES



The clean lines of our CUBIX SERIES integrates waste and recycle organization tastefully into all workspaces.

Our subtle color palette offered along with planter pairing, creates a naturally pleasing choice for waste and recycle organization.

Available with a selection of 4 standard tops for easy sorting.



# ALTOS SERIES RECYCLE CENTERS



## ALTOS SERIES RECYCLE CENTERS

offer the ability to provide a single unit WASTE and RECYCLE CENTER with easy-to-service seamless plastic liners. 2, 3, or 4 opening models available.



Large choice of

# NATURE INSPIRED FINISHES



- Standard Gloss
- Matte— a Soft Matte Finish
- Orange Peel— a Slightly Textured Finish
- Metallic— a Satin Metal-Like Finish
- Sandcrete— a Concrete-Like Texture
- Riverwash— a Multicolor, Stone-Like Coarse Texture



# Standard FINISHES





## ENVIRONMENT STATEMENT:

The COURTYARD COLLECTION offers flexibility with a variety of finishes. The standard Gloss finish has the color under a clear resin which protects the finish and allows for easy cleaning. There is a soft matte finish which provides less gloss or the texture Sand Crete finish that creates a look of concrete or stone. The new Metallic finishes provide the look of metal.

CCR is a dent resistant, high strength and light weight alternative. CCR is suitable for interior and exterior applications and is very good in corrosive environments. CCR is perfect for in locations near the ocean where there is a high salt content in the air, and also resists corrosion from floor cleaning chemicals.

CCR receptacles can be weighted for exterior applications. To weight a unit we would suggest a flat paving stone placed in the bottom of the unit.

Allé CCR Receptacles include seamless liners which hide the trash bag as well as providing the added protection from leaky trash bags.

Allé is very committed to maintaining and continuing to develop a sound position regarding environmental stewardship. Reduce, reuse and recycle are practiced and developing products with regard to green practices using sustainable design is critical to the future.

The Allé COURTYARD Receptacles and Planters are manufactured from CCR which is made from silica sand, a plentiful, non-polluting resource with low environmental impact. CCR can be re-processed for other uses or safely disposed of since it is completely inert. CCR manufacturing requires minimum energy compared to steel, or plastic. Allé also uses a minimum VOC manufacturing process.

Allé remains committed to developing and providing products that are designed and produced with an environmental awareness.

## SPECIFICATIONS for CCR Receptacles & Planters

### MATERIALS:

All CCR parts shall be constructed of reinforced thermosetting polyester resin using either the hand-layup and spray layup methods.

- Fibers shall be PPG or equivalent.  
For hand layup fibers should be uniform chopped strand mat, minimum 3 oz. density. Planters must use minimum 3 layers (or spray equivalent).
- Polyester resin shall be compounded by a reputable manufacturer. All planters will be fabricated of 100% resin inorganic fillers will not be acceptable.
- Visual surface is of a solid UV-stabilized, colorfast non-fading, weather and stain resistant pigmented gel-coat, uniform in color and texture and permanently fused to the fiberglass laminate. All exposed surfaces shall have minimum 16 MIL layer of color incorporated into the resin.

### CONSTRUCTION:

- Architectural parts shall be fabricated by hand-layup, spray laminate. The finished plastic material shall be not less than 5/32" thick and thicker in those areas requiring additional structural strength.
- Where ribs or stiffeners are to be fastened by spray laminating over molded forms, the stiffeners or ribs shall be located, and spray laminated into position so that the finished joint shall conform to performance specifications below.
- For vertical surface reinforcement, an inorganic honeycomb strengthening layer using double-veiled, bonded material shall be located and hand- or spray – laminated into position prior to the wall material setting. the entire honeycomb panel must be subject to pressure during curing to ensure proper bonding to wall. Honeycomb thickness will be a minimum 1/4", or thicker as required for larger spans. Marine-grade plywood may be substituted for additional wall support when required.

## PERFORMANCE Characteristics & Capacities:

Finished product to yield the following minimum performances

Hardness, Barcol	50
Tensile Strength	12,500 psi
Elongation at Break	1.3%
Modulus of Elasticity	1,020 ksi
Flexural Modulus	754 ksi
Flexural Yield Strength	27,600 psi
Compressive Yield Strength	21,800 psi
Glass Content, Average	35%

Vertical wall panels will not deform more than L/200 when loaded with 50 lbs./cu. ft. soil mass.

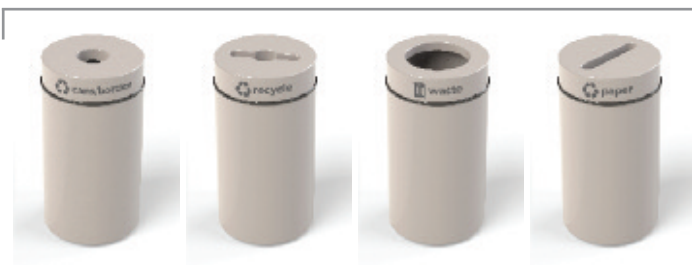
## COURTYARD COLLECTION

### CIRCA



16"D x 30"H  
18"D x 30"H  
24"D x 30"H

### CIRCA RECYCLE SERIES



16"D x 30"H

CIRCA PLANTER:  
sizes From 11" – 96"D



### CUBIX



16"SQ x 30"H  
24"SQ x 30"H

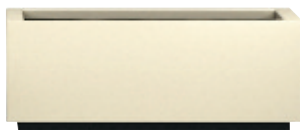
### CUBIX RECYCLE SERIES



16"SQ x 30"H



CUBIX SQUARE PLANTER:  
sizes From 16" – 96"SQ



CUBIX RECTANGULAR PLANTER:  
sizes From 36" – 96"L

## BOLLA



16"D x 36"H  
18"D x 36"H  
24"D x 36"H



Door Option

## MORO



20"SQ x 37"H  
24"SQ x 36"H  
2 Opening Option



4 Opening Option

## ROSSA



18"D x 30"H  
20"D x 32"H  
24"D x 36"H

## CALLE



18"D x 30"H  
20"D x 32"H  
24"D x 36"H



# COURTYARD COLLECTION

**allé**

PROMENADE



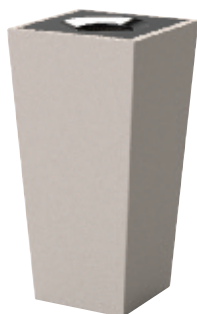
Matching Planter

SOLA



Matching Planter

YUMA



Matching Planter

MAYAN\*



AZURE\*



PIAZZA\*



ALSACE\*



\* Matching Planters available.

## RIVERSIDE



16"D x 39"H  
18"D x 44"H  
24"D x 37"H



16"D x 30"H  
20"D x 35"H  
24"D x 37"H

## BISTRO\*



20"SQ x 37"H  
24"SQ x 36"H



24"D x 36"H

\* Doors for openings available.

## ALTOS RECYCLE SERIES



2 Opening



3 Opening



4 Opening

Various Opening Combinations Available.

## COURTYARD COLLECTION

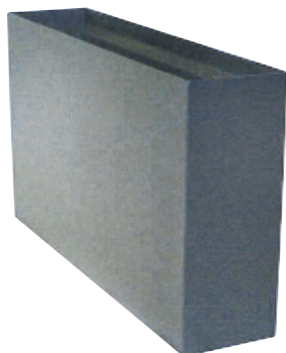
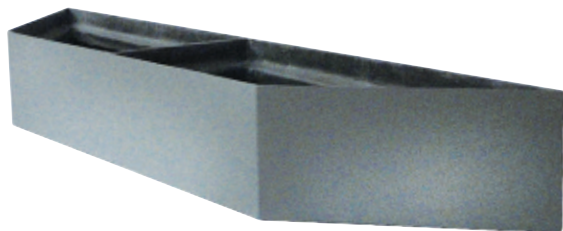
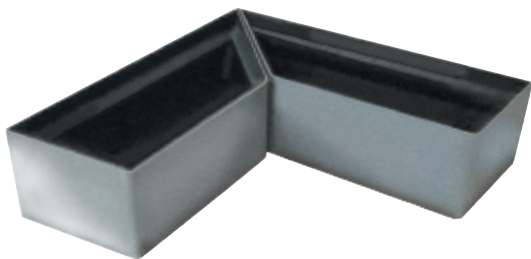
**allé**



## CUSTOM SERIES

**alle**

The custom series option is available when the standard product is not suitable. Custom sizes, shapes and finishes are available. Minimum quantities apply.







Allé Designs

PO Box 961

Amherst, NY 14226

ph 716.446.5538

fx 716.446.5539

alleltd.com

Please email quotes: [info@alleofficesolutions.com](mailto:info@alleofficesolutions.com)

